



## Cut & Fill

Slash your cut and fill calculation time and increase your project profits with Cut & Fill.

In minutes, Cut & Fill determines quantities at an accuracy level difficult to match using manual takeoff methods. And a more accurate earthwork estimate means less money wasted on costly mistakes.

Developed for Microsoft Windows operating systems, the 32-bit architecture of Cut & Fill offers solid software performance, speed, and extended use of computer memory—all ensuring smoother, faster estimating.

You can quickly calculate cut, fill, and strip quantities by simply digitizing the boundary of work, contours, layers, elevations, etc., for the existing and proposed surfaces. The software then determines the cut and fill quantities and graphically displays the results.

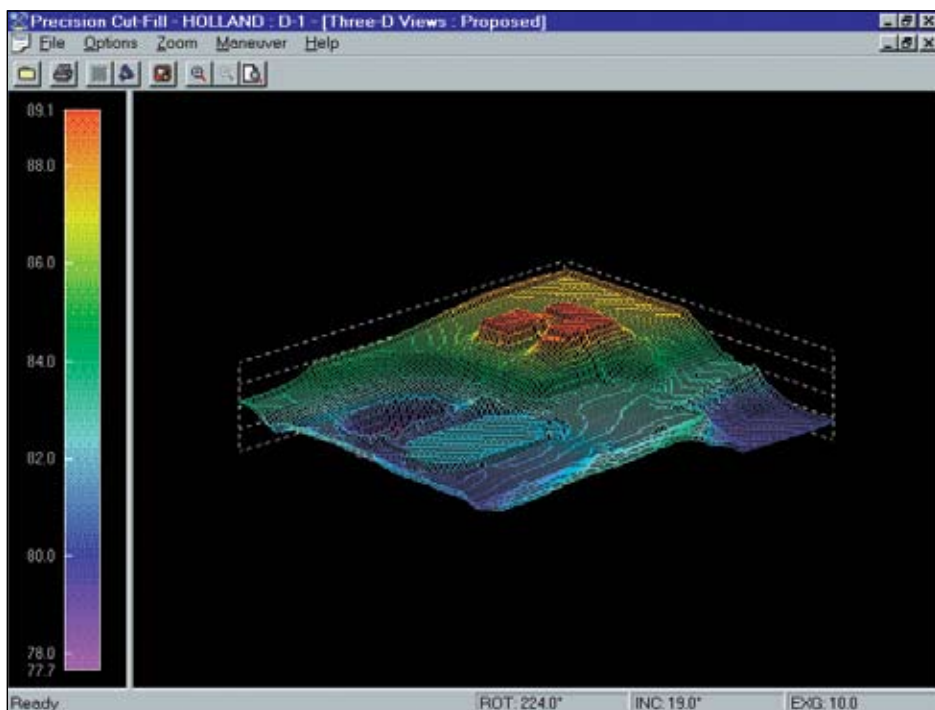
With Cut & Fill you'll produce more accurate earthwork estimates in less time. And that's the bottom line.

## BENEFITS

Produce more accurate earthwork estimates in less time.

Quickly calculate cut, fill and strip quantities using digitizing technology.

Graphically view and analyze existing and proposed contours, layers and elevations.



◀ *Cut & Fill quantities are quickly determined and 3-D graphics displayed for immediate analysis.*

## Features

- Interfaces with Estimating and Digitizer software.
- Is compatible with virtually any digitizer hardware that uses a 32-bit WinTAB driver.
- Provides support for Windows-compatible plotters.
- Calculates cut and fill quantities almost instantly using contour lines, sloping lines, elevation points, layers and structures.
- Lets you define and save multiple boundaries and perimeters as Areas of Interest (AOI). For example, you can store the entire site as an AOI or each phase of the project.
- Automatically adjusts for soil shrinkage and expansion.
- Displays contours as they are traced to provide a visual check of your work.
- Uses the grid cell calculation method for maximum accuracy.
- Provides cross-sectional display of all surfaces.
- Calculates substrata volumes by tracking multiple surfaces per drawing.
- Allows you to create and store an unlimited number of surfaces and drawings for each project.
- Has "zoom-in" capabilities on the screen.
- Stores project information (e.g., project description, location, estimator, plan number, bid date) online.
- Adjusts automatically for top soil removal and replacement.
- Offers extensive online help throughout the system.
- Displays surfaces in 3-D graphics.
- Magnifies 3-D graphics to give you a closer look.
- Offers user-defined elevation ranges to protect against input errors.

## Reports

- Grid Values Report: Shows detailed elevations for each grid cell of a selected surface, both calculated and actual, allowing you to double-check data accuracy.
- Total Volumes Report: Compares two surfaces for each drawing and gives a tabular summary of cut and fill volumes for the site or specific area of interest.
- Areas and Volumes Report: Displays the area and volume of each enclosed entity (layers and structures) for a single surface in a tabular and/or graphical form.
- Cross Sections Report: Visually compares as many surfaces as needed. Allows division of site into cross sections for error-checking or to view the locations of cuts and fills.
- Site Balance Report: Compares two surfaces and calculates the amount to raise or lower the proposed surface in order to balance the site.
- 3-D Views: Shows the surface model in a three-dimensional view. Select a single surface, or a view of the difference between two surfaces, to check for errors or present the project.

Cut & Fill is a part of the Sage Construction and Real Estate family of fully integrated software created to streamline work and connect the people you depend on to build your business.



End-to-end solutions. Expert advice.  
Ongoing support. That's Sage 360®.

Sage Software supports the needs, challenges, and dreams of 2.7 million small and mid-sized business customers in North America through easy-to-use, scalable and customizable software and services. Sage Software is a subsidiary of The Sage Group plc, a leading international supplier of business management software and services formed in 1981 and listed on the London Stock Exchange since 1989.

15195 NW Greenbrier Pkwy  
Beaverton, OR 97006-5701  
800-628-6583  
[www.sagecre.com](http://www.sagecre.com)

**sage**  
software  
*Your business in mind.*

©2008 Sage Software, Inc. All rights reserved. Sage Software, Sage Software logos and the Sage Software product and service names mentioned herein are registered trademarks or trademarks of Sage Software, Inc., or its affiliated entities. All other trademarks are the property of their respective owners. 06/08 08-50286/0608