

# Sage Timberline Office Version 9.6 Enhancements

Now, running your business as efficiently and intelligently as possible is more critical to your success than ever. To maintain profitability during these unpredictable times, your business management tools have to:

- Let you optimize the way you work without dictating how you work.
- Give you the flexibility you need to integrate productivity-building applications for all the financial and operational aspects of your business, not just a few.
- Allow you to effectively share information and collaborate with external resources to maximize efficiency.

The fact is – the easier your business can acclimate to new technologies, the easier you can navigate your business to prosperity.

That's why, at Sage Construction and Real Estate, we are 100% committed to continually investing in Sage Timberline Office; to maximize its effectiveness, make your life easier, and lead your business to profitability faster. You need your business to be operating at peak performance now more than ever. So, we've accelerated the release cycle for Sage Timberline Office, which means you'll be getting more of the enhancements you've been telling us you need.

With Version 9.6, you'll be able to present financial trends over longer periods of time with a greatly expanded General Ledger history, produce estimates in multiple currencies that automatically convert to a base currency within your estimating spreadsheet – and much more, so you can:

**Keep up with evolving technology** – Sage Timberline Office Accounting and Management Products applications, Estimating Products applications, and Document Management are now compatible with 64-bit operating systems in addition to 32-bit operating systems. This means it's easier for you to keep up with emerging technologies to improve performance with new, 64-bit hardware.

**Improve business visibility** – Get a better picture of where your business stands with new fields for General Ledger Reports and Financial Statements, including 5 additional year-end balances and 9 years of additional activity balances to your General Ledger. Your additional year-end and activity balances will not only greatly expand your reporting capabilities and improve your financial analysis, they will also automatically populate as months or years are closed in General Ledger; and can even be populated using ODBC compliant applications.

**Improve file maintenance and error correction capabilities** – Ever experience a GL transaction that won't post for one reason or another? Maybe an incorrect date was entered so far into the future that it shows up as a "rejected" transaction throughout all your GL posting journals. Now, you'll be able to move General Ledger un-posted transactions from one new file to another new file in addition to moving transactions files from current to current, current to history, and history to history. The result? You'll enjoy greatly improved file maintenance with the ability to correct errors with ease.

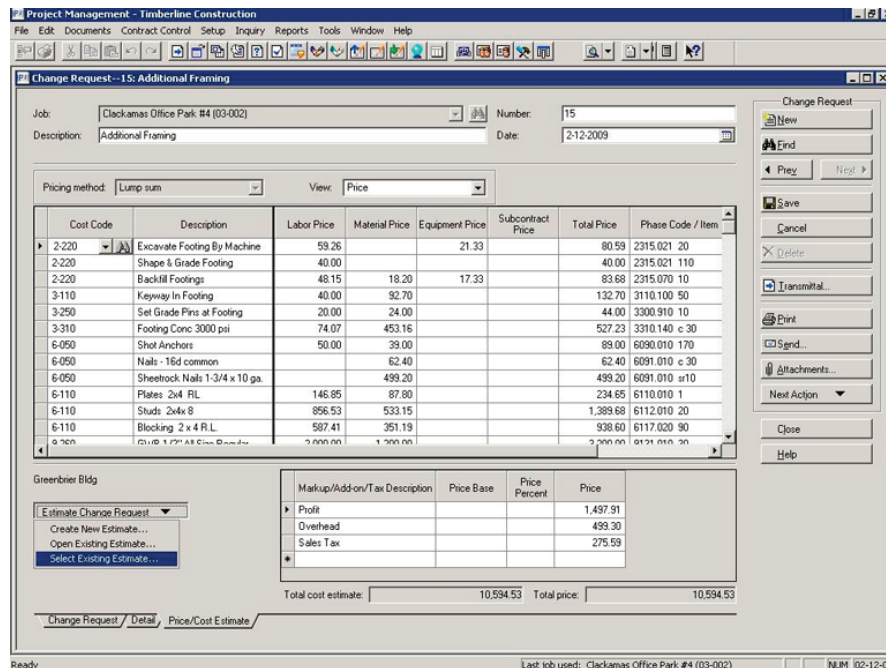
**Estimate with more accuracy and ease** – Version 9.6 includes a wide range of exciting, new estimating features including integration with Project Management. More estimating functionality means more efficiency and precision, so your business can:

- Support multiple currencies – Now, if you're performing work or sourcing materials and equipment outside of the U.S., Estimating allows you to easily convert and display both currencies using spreadsheet layout and manipulation.

Get ready  
for more!

- Integrate
- Collaborate
- Acclimate

- Price out Change Requests from within the Project Management Change Request window – Now, for the first time, seamless integration between Estimating and Project Management lets you use Estimating for pricing out Change Requests right from within the Project Management Change Request window. This means when your Estimator or Project Manager is faced with a potential change in the scope of work and needs to provide the owner with a quote, they can easily estimate the change using Estimating and automatically populate the item grid in the Change Request screen. Plus, you can now also automatically launch the Project Management RFI feature from within Estimating. So, when additional information (Request for Information - RFI) is needed in order to properly price out a particular item, the Project Management RFI feature is always just a short mouse click away.



Seamless integration between Estimating and Project Management allows you to use Estimating for pricing out Change Requests right from within the Project Management Change Request window.

- Upgrade individual estimating files on the fly – Why spend hours upgrading all your estimates at once each time a new release comes out? That can take hours. So, now when you need to restore archived estimates from an earlier version of your software, you won't need to upgrade all estimates and/or database files all at the same time. The system automatically identifies the files that need to be upgraded on a file-by-file basis so your estimating files get updated as you work. Now, that's a time-saver.
- Create new version of existing assemblies with ease – Ready to save even more time? We've enhanced the "copy assembly" feature. In previous versions when copying an assembly from one location to another, the items would copy, but you would lose the assembly detail. Meaning, you wouldn't have the variables (i.e. length, width, depth, etc). Now when you copy the assembly from one location to another, it shows up as an assembly and allows you to see the variables that were used to calculate the assembly.
- Streamline your RFQ and Buyout process – In the past, you've always had a place to enter the subcontractor amount and name as well as material, but no place to record the material vendor name. With Version 9.6, you'll be able to log and display both as well as pass this information to the Buyout module, so your entire RFQ, vendor assignment, and Buyout process runs more efficiently than ever.
- Select values from numeric columns that automatically display totals in the status bar – The Auto sum has been enhanced so you can view display totals at a glance.

**Archive Project Management jobs effortlessly** – With the new Project Management Wizard moving current Project Management jobs to an archive folder or archived Project Management jobs to a current folder is a snap. You'll considerably improve processing time for current data, while keeping archived data secure for review later and/or reporting needs. Better still, it's also securable through the Security Administration tool.

**Run custom Crystal Reports faster and easier** – Want to limit your Crystal Reports to specific vendors, employees, jobs and more without having to refer to a printed list? Now, Custom Report designs can include range values that you can use in Sage Timberline Office applications, including the ability to select these value ranges from a database list. The best part is that you'll no longer have to remember key pieces of information when creating customized reports.

**Integrate your address book with Sage CRM** – Version 9.6 lets you integrate your Address Book with Sage CRM 6.2.

\*Note: Residential Management and DocuVault are not compatible with 64-bit operating systems .